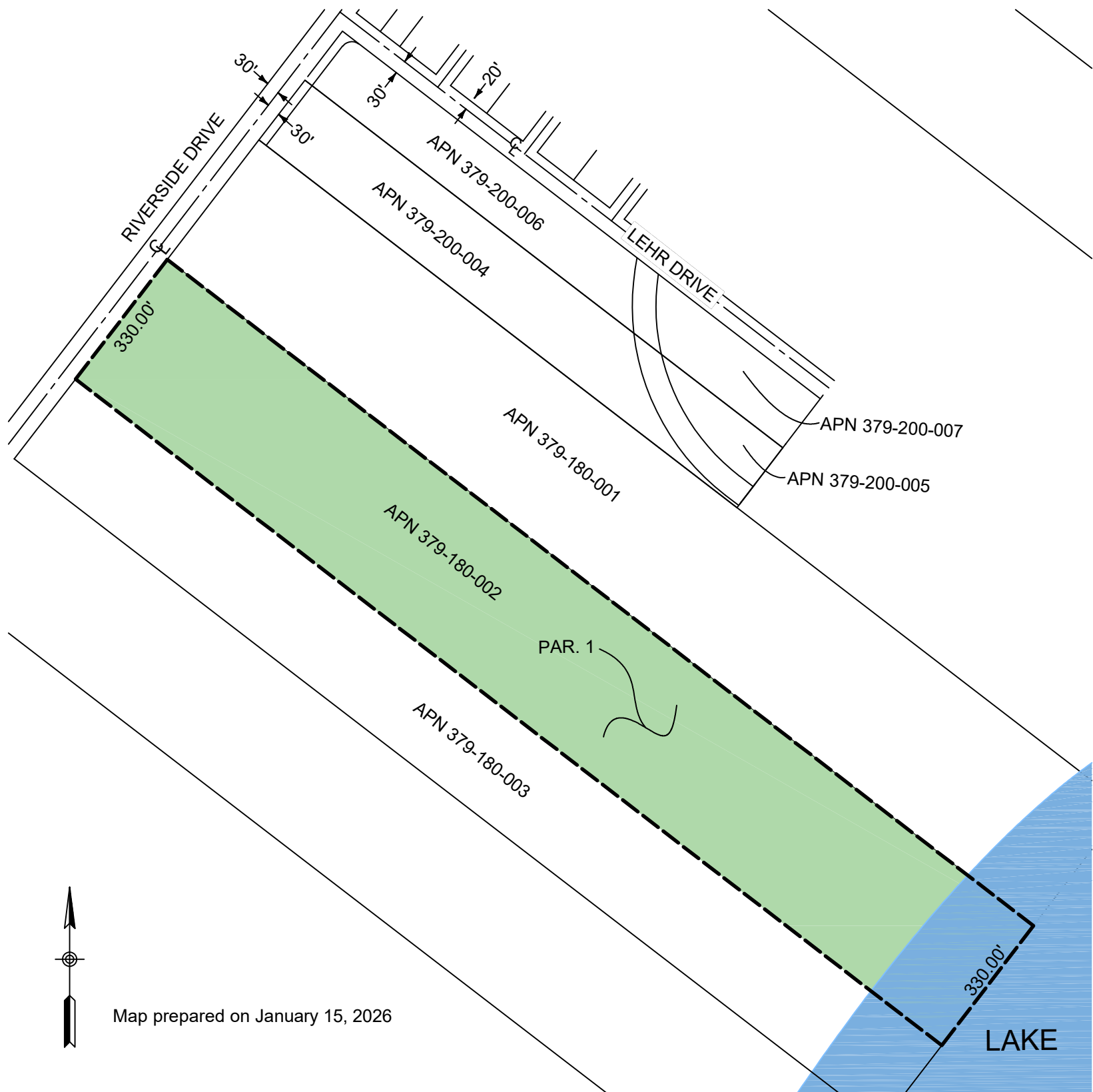


LWCF BOUNDARY MAP FOR \_\_\_\_\_, \_\_\_\_\_  
 LWCF PROJECT NUMBER \_\_\_\_\_, IN THE COUNTY OF RIVERSIDE



Map prepared on January 15, 2026

\_\_\_\_\_  
 Adventure County Authorized Representative

\_\_\_\_\_  
 Date

**-----** 18.12 +/- Acres will be place under LWCF protection in perpetuity

\_\_\_\_\_  
 CA Department of Parks and Recreation

\_\_\_\_\_  
 Date

\_\_\_\_\_  
 National Park Service

\_\_\_\_\_  
 Date

This map is not binding until it is signed by NPS when the final GRANT payment is approved by NPS. If there was a previous LWCF PROJECT(S) completed at the same PARK SITE, then the GRANTEE, OGLAS, and NPS will review the LWCF BOUNDARY MAPS associated with the previous PROJECT(S) for consistency with the LWCF BOUNDARY MAP for the new LWCF PROJECT.

Note: Authority cited: Section 5099.10 Public Resource Code. Reference: Sections 5099-5099.12, Public Resource Code, Public Law 88-578, 16 U.S.C. 4601-6(f)(3)

SCALE: 1" = 280'